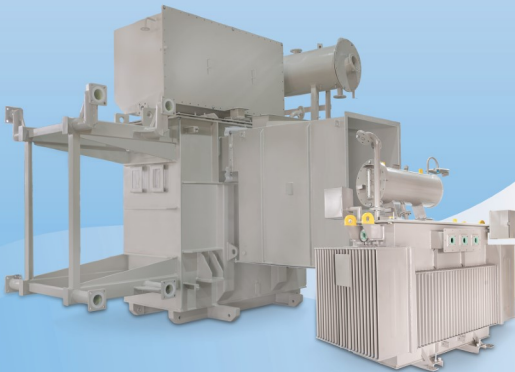


tashé

Powering the Backbone of Energy

Trusted name in manufacturing
high-performance transformer components

Transformer Tanks | Corrugated Fin Walls



Precision. Strength. Reliability.

www.tashe.co.in



tashé

Unit 1

F-194, RHCO Industrial Area,
Khushkhara, District Khairthal-Tijara,
Rajasthan 301019 (India)

Unit 2

F-73, RHCO Industrial Area,
Karol, District Khairthal-Tijara,
Rajasthan 301707 (India)

Table of Contents

Leadership Message	2
About Us	3
Vision & Mission	4
Our Products	
» Transformer Tanks	5
» Corrugated Fin Walls	7
R&D / Engineering Support	9
Quality Policy	10
Global Presence	11/12
Manufacturing Process	13/14



Engineering Reliability and Quality for Global Power Infrastructure Industries

Leadership Message

At Tashe Power India, we believe that true engineering goes beyond manufacturing – it is about creating solutions that power progress.

Over the years, we have grown from a manufacturing unit into a globally trusted partner for transformer fabrication, driven by our commitment to quality, precision, and innovation. Every tank, every fin wall, and every component we deliver carries our promise of reliability and performance.

Our approach is simple – combine strong engineering fundamentals with modern manufacturing technologies and a deep understanding of customer needs. This allows us to not only meet expectations but consistently exceed them.



As we continue to expand our global footprint, we remain focused on investing in advanced infrastructure, strengthening our R&D capabilities, and building long-term partnerships across the power industry.

We see the future as an opportunity – to innovate, to grow, and to contribute meaningfully to the evolving energy ecosystem.

At Tashe, we are not just building products – we are building trust.



**Engineering Strength.
Delivering Reliability.
Built on Precision. Driven
by Performance.**

About

Established in 2008, Tashe Power India Pvt. Ltd. is one of India's leading manufacturers of Transformer Tanks and Corrugated Fin Walls, serving transformer manufacturers across India and global markets.

With strong engineering expertise, modern manufacturing infrastructure, and customer-centric operations, Tashe delivers high-quality fabrication solutions designed for durability, performance, and long service life.

Over the years, Tashe has built long-term partnerships with transformer OEMs by delivering:

- » Precision Manufacturing
- » Engineering Support
- » Custom Design Solutions
- » Reliable Delivery
- » Global Supply Capability

Today, Tashe is a trusted partner to transformer manufacturers across India and around the globe.

tashé

The Infrastructure
Tashe Power India

Company Overview

ISO 9001:2015 certified manufacturer of transformer fabrication and cooling solutions, with 2 units and 90,000+ sq. ft. production capacity.

Scale & Global Reach

With a capacity of more than 500 MT per month, Tashe has delivered 40,000+ transformer tanks across 15+ countries, reflecting strong global presence and reliability.

Our Vision

To become a globally trusted leader in Transformer Tanks, Cooling Radiators, and Fabricated Power Equipment, delivering engineering excellence, innovation, and reliability to power infrastructure worldwide.

We aim to continuously enhance our manufacturing capabilities, expand global presence, and create long-term value for customers, employees, and stakeholders.



Mission

Customer Focus

Deliver high-quality, customized fabrication solutions that meet evolving customer requirements.

Engineering Excellence

Continuously improve design, manufacturing, and quality processes through innovation and technology.

Global Growth

Expand our presence across international markets by delivering reliable and competitive solutions.

Operational Excellence

Develop lean manufacturing systems to improve efficiency, reduce cost, and enhance productivity.

People & Culture

Create a workplace that encourages innovation, teamwork, and professional growth.



Transformer Tanks

Tashe manufactures corrugated and conventional transformer tanks ranging from 100 KVA to 15 MVA, engineered for durability, performance, and long service life.



Engineering & Design

All tanks are designed using latest 3D Modelling Software to:

1. Optimize weight
2. Improve structural strength
3. Avoid manufacturing errors
4. Enhance production efficiency

Features

1. High dimensional accuracy
2. Superior weld quality
3. Leak-proof design
4. Corrosion resistant coating
5. Custom engineering support

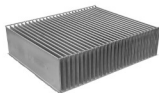


Manufacturing Process

1. CNC Cutting
2. Press Brake Forming
3. Fitment Assembly
4. Certified Welding
5. Dimensional Inspection
6. Leak Testing
7. Surface Treatment
 - » Shot Blasting (SA 2.5 / SA 3)
 - » Zinc Metallizing
 - » Epoxy Coating
 - » Flood Painting
 - » Spray Painting
 - » Oven Drying
 - » Paint Standard ISO 12944 C3 / C4 / C5

Corrugated Fin Walls

Tashe manufactures high-performance Corrugated Fin Walls designed for efficient cooling and long-term reliability of transformers. Produced on fully automatic lines, our fin walls ensure consistent quality, structural strength, and optimal heat dissipation.



Features

1. Fatigue tested up to 11,000 cycles equivalent to 30 years of transformer life
2. Embossed channels for structural strength
3. Spot welding for enhanced durability
4. Uniform heat dissipation design
5. Leak-proof construction
6. Custom sizes and configurations available



Engineering & Design

1. Designed as per transformer cooling requirements
2. Optimized fin pitch and geometry for maximum heat dissipation
3. One-piece fin wall design to eliminate weld joints
4. Edge bending options (upward/downward) based on tank design
5. Structural reinforcement using rectangular support strips

Our engineering team ensures that each fin wall is designed for maximum efficiency, durability, and ease of integration with transformer tanks.



Manufacturing Process

1. Fully Automatic Fin Folding
2. Precision Edge Cutting
3. Automated Fin Edge Welding
4. Automated Spot Welding on Embossments
5. Dimensional Inspections
6. Leak Testing

Each fin wall is produced with tight tolerances and consistent quality using advanced manufacturing systems.

Research & Development

Innovation and engineering excellence are at the core of Tashe's manufacturing philosophy. Our in-house R&D team continuously works on improving product performance, optimizing design, and enhancing manufacturing efficiency.

1. 3D Design & Modelling
2. Product Development
3. Weight Optimization
4. Structural Analysis
5. Design Validation
6. Customer-Specific Engineering

Engineering Support

- » Custom Tank Design
- » Cooling Performance Optimization
- » Manufacturing Feasibility Analysis
- » Cost Optimization Engineering

Continuous Improvement

- » Material optimization
- » Process automation
- » Manufacturing efficiency improvement
- » Product life enhancement



tashé

Quality Policy

At Tashe Power India, quality is an integral part of every stage of manufacturing. We are committed to delivering products that meet the highest standards of performance, reliability, and durability.

Our Quality Commitment

1. Deliver defect-free products
2. Ensure consistent manufacturing standards
3. Meet customer specifications
4. Continuous process improvement
5. Compliance with international standards

Quality Assurance Process

1. Incoming Raw Material Inspection
2. In-Process Inspection at all stages
3. Fluorescent Penetrant Inspection for Leak Testing
4. Diesel-Filled Method for Leak Testing
5. Pressure Holding Method for Leak Testing
6. Paint Inspection - Surface Profile, DFT, Adhesion, and Visual Defect Checks
7. Final Inspection - Complete Assembly Verification of the Job



tashé

Our Global Presence

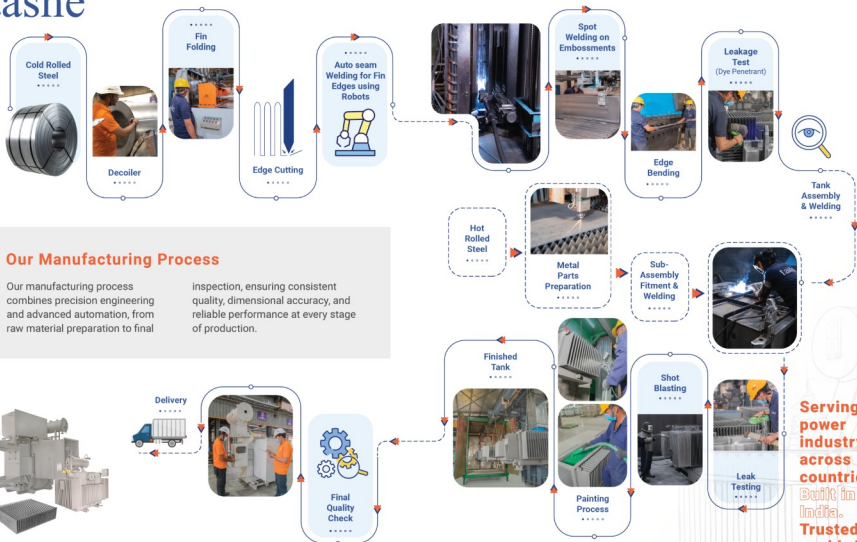
Tashe Power India has a strong global presence across 15+ countries, **delivering over 40,000 transformer tanks worldwide**, recognized for consistent quality, reliable performance, and long-term customer partnerships.

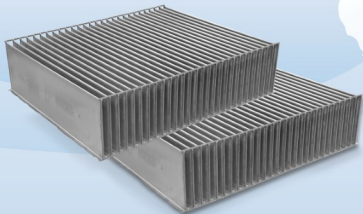
tashé

Precision Engineering. Global Reliability.

- | | | |
|-----------------|---------------|---------------|
| 1. India | 7. Australia | 13. Ethiopia |
| 2. Oman | 8. Thailand | 14. Dubai |
| 3. Saudi Arabia | 9. Nepal | 15. Abu Dhabi |
| 4. Egypt | 10. Israel | 16. Sharjah |
| 5. Ghana | 11. Sri Lanka | |
| 6. Kenya | 12. Uganda | |

tashé





Unit 1

F-194, RIICO Industrial Area,
Khushkhera, District Khairthal-Tijara,
Rajasthan 301019 (India)

Unit 2

F-73, RIICO Industrial Area,
Karoli, District Khairthal-Tijara,
Rajasthan 301707 (India)



Telephone

+91 97117 18600

Email

info@tashe.co.in

Website

www.tashe.co.in

tashe

Tashe is a trusted
name in manufacturing
high-performance
transformer components
engineered for durability and
efficiency.



For More Details
Please Scan here